

# **FIJI VOCATIONAL TECHNICAL TRAINING CENTRE FOR PERSONS WITH DISABILITIES**

## **JOB REPORT**



# TYPE OF ORGANIZATION

- ◆ Under the management of the Fiji National Council for the Disabled Persons, a statutory body of the Ministry for Health, Women & Social Welfare



# HISTORY

- ◆ In 1976, the General Assembly of the United Nations proclaimed 1981 as the International Year of Disabled persons (IYDP). Fiji Rehabilitation Council was set up, its management and developments over the years, in order to assist in making important decisions about its future. Now known as Fiji Vocational Training Centre for Disabled Persons

# VISION

- ◆ Total empowerment, equal opportunities and full participation in a barrier free environment to all disabilities in Fiji. And a fully truly inclusive society becomes a reality.



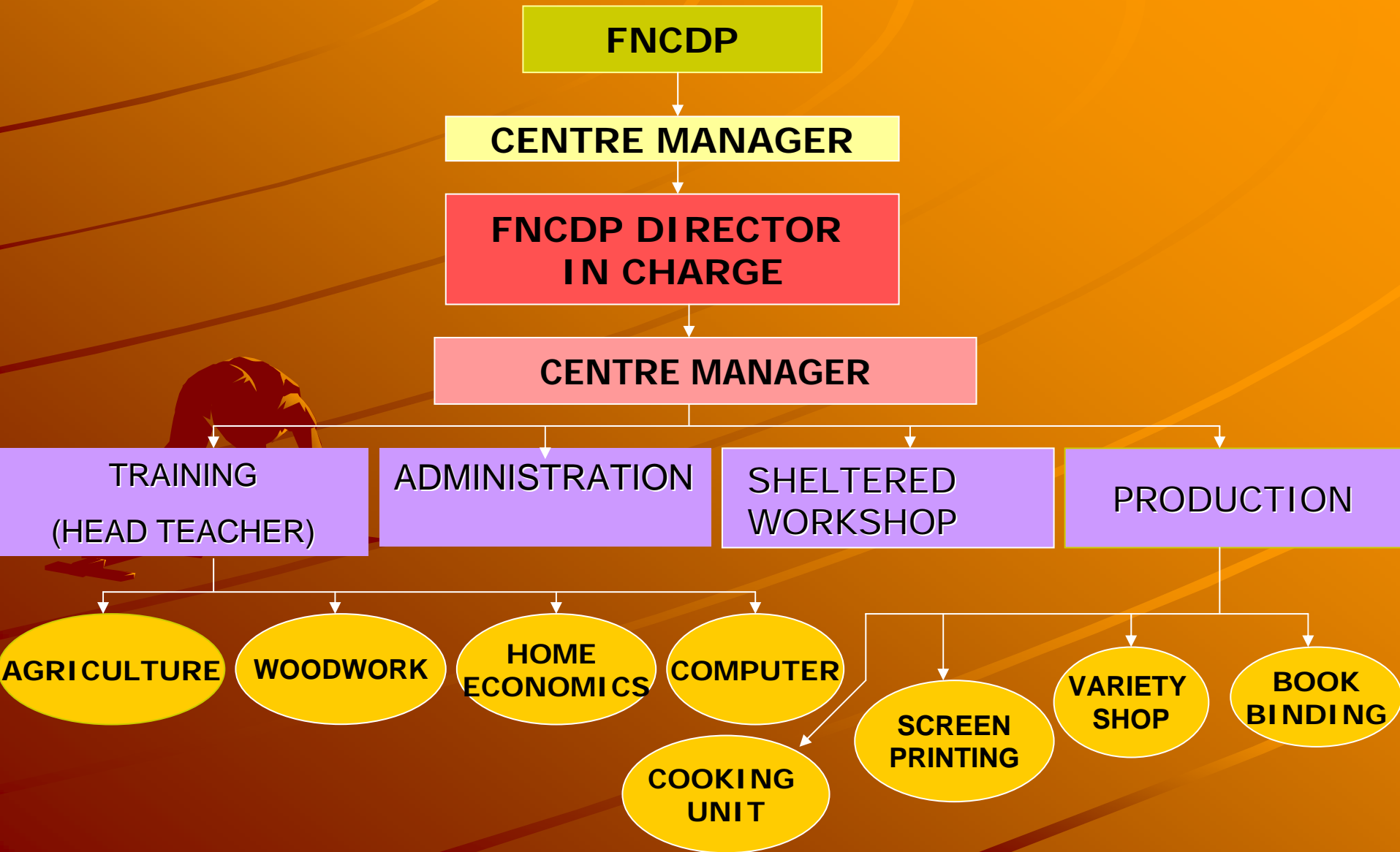
# MISSION

- ✦ The Fiji Vocational and Technical Training Centre for Disabled Persons trains disabled young people with teaching employment related knowledge and skills, providing them with a nurturing environment resulting in disabled people leading satisfied and independent lives.
- ✦ Employment and self – employment in the Agricultural sector is an activity directed towards the fulfillment of this mission. And this is a project which is community based but monitored by vocational trainers. This development project is specifically designed for catering intellectual disabilities out in the communities who can access land use.

# OBJECTIVES

- ◆ To educate trainees in the skill and knowledge of disabled people in Home production, Vocational Training skills, in the areas Fish breeding, Horticulture, screen printing, wood work, paper production, metal work and Home Economics to supplement their income and attain self autonomy and sufficiency

# ORGANISATION CHART OF FIJI VOCATIONAL TECHNICAL TRAINING CENTER FOR PERSONS WITH DISABILITIES



# NUMBER OF STAFF

- ◆ 5 Special Education Teachers
- ◆ 3 Administration Staff (1 on wheelchair)
- ◆ 5 Supervisors ( 1 on wheelchair)



# MAJOR PROGRAMS

## ✦ Sheltered Workshop

The program is designed to help people with disabilities to become more independent and self sufficient to give opportunities to learn specific skills, good working habits and to learn a living and become worthwhile members of our communities.

The centers sheltered workshop has two main functions and that is to find the ability or abilities of trainees that is also available in the centre

## ✦ CARPENTRY AND JOINERY

The Vocational course of study for our trainees who have gone through out special schools through out Fiji and interest in skill training.

The course is designed to provide an introduction to technical education and training to trainees aspiring a career in the field of carpentry and joinery.

# ◆ HOME ECONOMICS

The program is designed to introduce students to the study of the home and family. It is being explored from the perspective view of how needs, values and goals affects the decision and relationships of members and how they manage available resource to promote individual well being in the context of the Family and the community they live in.

The course focuses on the discovery of food preparation and clothing construction

# ✦ OFFSET PRINTING/BOOKBINDING AND SCREEN PRINTING

Supervisors provide formal training before trainees are put on to actual jobs. Due to commercial customers providing us with jobs, senior members of the centre mostly carry out offset printing.

Targeted populations who may part take in the programs are students who have gone through special education and have reached 16 years and above.

Members of different affiliates of different disability groups, but more focus has priority study is been given to intellectual disabilities.

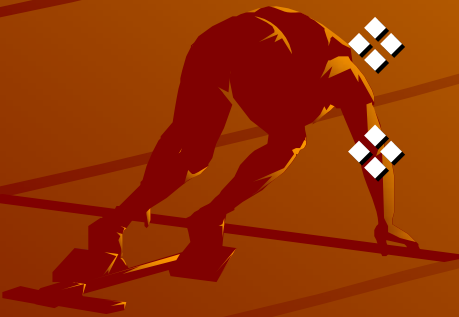
## ◆ SHELTERED WORKSHOP

This department is underutilized and their resources are underdeveloped and outdated. It is the only place in Suva that severely disabled people can spend their day. Many are young people who must reside in nursing homes as their only option.

While it may be better than remaining idle all day, people with disabilities have right to move in life. The current centre has a minimal vocational rehabilitation, training or employment value. Disabled individuals work in groups on a contract to affix labels to ice cream container lids and packaging wooden scoops.

# ✦ TARGET GROUPS (TYPE OF DISABILITY AND ELIGIBILITY)

- ❖ Cross Disability
- ❖ Physically Intellectually
- ❖ Psychiatric Survivors
- ❖ Austics



# **STRENGTH AND WEAKNESS**



# STRENGTH

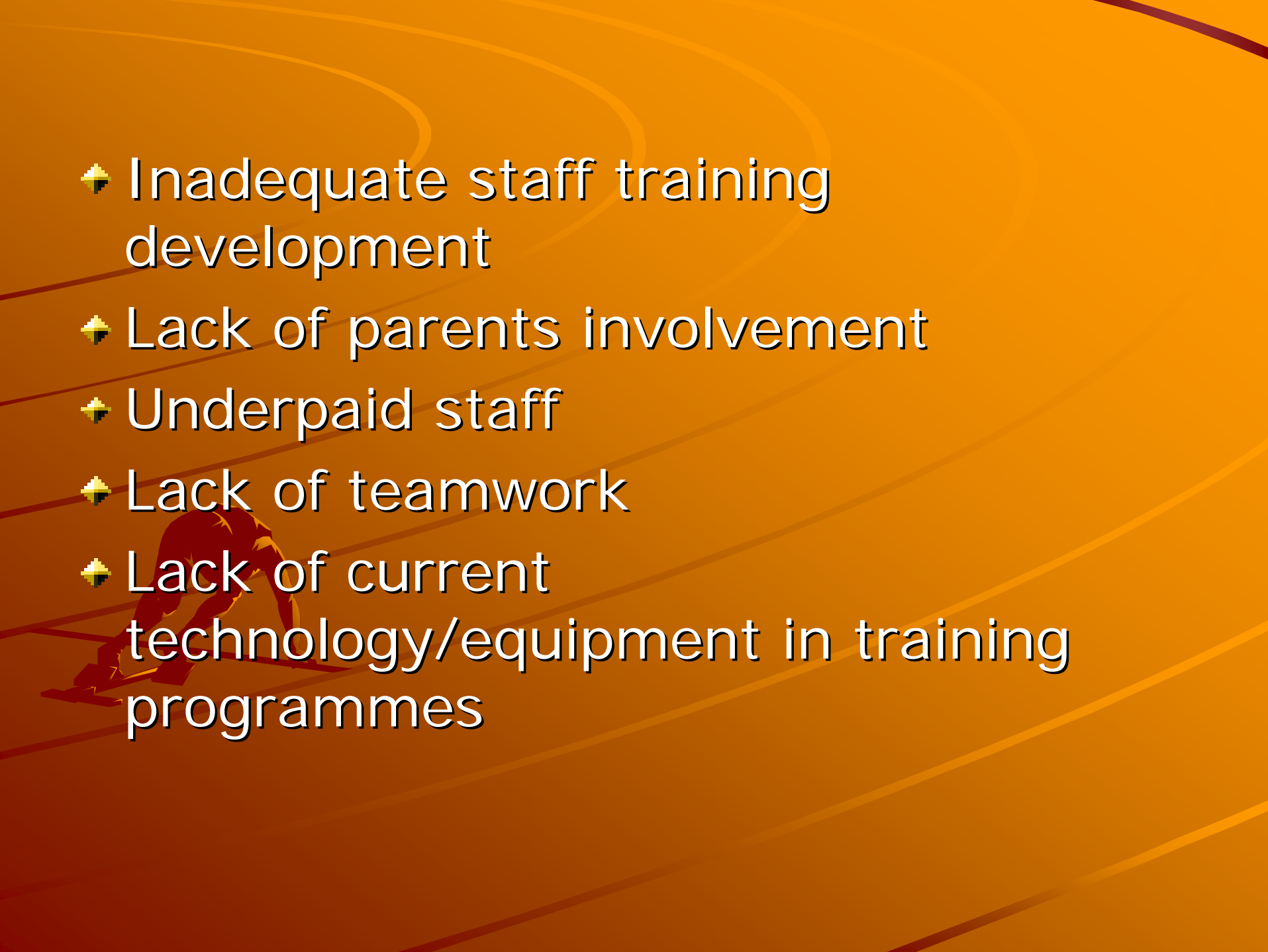
- ◆ Own Building
- ◆ Transport – School Bus
- ◆ Limited Equipments
- ◆ Only Registered Vocational Training Centre which employs people with disability
- ◆ Sheltered employment for people with severe disabilities
- ◆ Existing training facilities

- ◆ Regular intake of trainees
- ◆ Committed Staff
- ◆ Self supporting (when no fund, we still go on ) in difficult times
- ◆ Available limited donors/volunteers (overseas)
- ◆ Limited human resources and man power resources



# WEAKNESS

- ◆ Outdated Equipment
- ◆ Insufficient funding and manpower
- ◆ Irregular attendance of trainees
- ◆ Only centre without comparison
- ◆ Punctuality of staff
- ◆ Absence of proper curriculum
- ◆ Teaching establishment (lack of recognition of Stakeholders)

- 
- ◆ Inadequate staff training development
  - ◆ Lack of parents involvement
  - ◆ Underpaid staff
  - ◆ Lack of teamwork
  - ◆ Lack of current technology/equipment in training programmes

# EXPECTATION OUT OF THIS TRAINING

- ◆ To learn how Japan teaches Vocational Technical Training skills to its population who are people with disabilities.
- ◆ To learn how job training and job placement are offered for PWD's in Japan
- ◆ To learn how follow up are done in Japan for PWD's who are already in employment
- ◆ To learn how private and government sectors contribute towards employment opportunities for PWD's

- ◆ To learn new skills that can offer self employment for PWD's who will be unable to be employed in the open market
- ◆ To learn self sustainable programs offered in Japan for PWD's

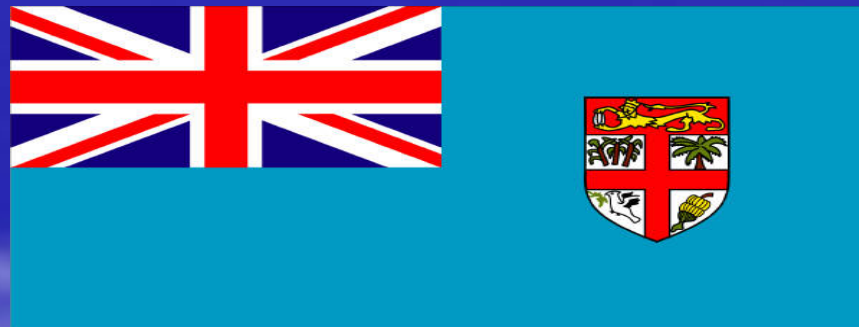


**THANK YOU...**



# COUNTRY PROFILE

## FIJI





**NAME OF COUNTRY :**

**Republic of Fiji Islands**

# TOTAL LAND AREA :

- Fiji consists of about 332 islands scattered over a land of 18,333 square kilometers (approximately one third are inhabited)
- Two main islands namely Viti Levu is 10,429 square kilometers Vanua Levu is 5,556 square kilometers

# POPULATION:

- According to the UN report in 2005, Fiji's population is approximately 854,000 but there is no specific data to monitor the population in urban and rural areas.

# ETHNIC GROUPS:

- Fiji is a multi racial country consisting of Fijians, Indo – Fijians and others namely includes Chinese and Rotumans.

➤ Indigenous Fijian	-	53%
➤ Indo – Fijians	-	40%
➤ Others	-	7%

# LANGUAGES:

- Fiji has three(3) official Languages, English, Fijian and Hindi

# RELIGION:

- Fiji is a multi – religious country and almost 58% of the population are Christians, 34% are Hindus , 7% are Muslim, others 1%

# LIFE EXPECTANCY:

- Life expectancy for male is 61 years and 65 years for female.

# **DISABILITY RELATED INFORMATION**

## **DEFINITION/CLASSIFICATION OF DISABILITIES**

- **“Disabled Persons” means persons, who as a result of physical, mental or sensory impairment are restricted or lacking in ability to perform an activity in the manner considered normal for human beings;**

# POPULATION OF PERSONS WITH DISABILITIES:

- Fiji does not have a correct data for the disabled population in the country but it has been a milestone achievement for FNCDP that its continued lobbying with the Government has and inclusion of special disability questions on the data collection sheet for the National Census 2007 which commenced on the 16<sup>th</sup> of September 2007.

# MAJOR LAWS AND REGULATIONS CONCERNED WITH PERSONS WITH DISABILITIES

- The inclusion of the Bill of Rights under the 1997 Constitution of the Republic of the Fiji Islands [chapter 4, Section 38]
- Affirmative action for the Disabled under the Social Justice Act 2001

- PSC Policy on Equal Employment Opportunity 2000.
- Public Health (National Building Code) pg 18 [access for persons with disabilities]
- FNCDP Act of 1994
- Cabinet approved the ratification of ILO Convention 159; Vocational Rehabilitation and Employment [Disabled Persons]
- Employment Relations Bill 2004 – An employer who employ physically disabled workers on a ratio of a least 2% of the total numbers of workers employed by the employer.

- Section 17 of the Human Rights Commission Act 1999, disability is a prohibited ground for discrimination particularly in the fields of employment, applying for work, providing approval for licenses or trade, calling or profession, the provision of housing, land or other accommodation and access to and participation in education
- Blueprint for affirmative action on special education.

- Town Planning Act Chapter 139 Geneva Provision November 1999. 46 (14) facilities for the Disabled Persons.
- Cabinet Decision 462 (FNCDP) building Code Access for PWD's (ii) agreed in principle that all the major buildings either constructed or rented by Government in future are to be disabled friendly and have accessibility provisions.
- Draft National Policy on Disability 2006 - 2016

# GOVERNMENT OR PRIVATE ASSISTANCE FOR PERSONS WITH DISABILITIES

- Persons with disabilities who are poor receives family welfare assistance from the Ministry for Health, Women and Social Welfare, this assistance is \$60.00 or above per month
- Non – government organization and the Statutory bodies receive government grants each year for administration and activities

- International Government, Local Government and private organization also assists in the areas of disability development in Fiji:

- Surveys
- Training
- Workshops
- Building
- Volunteers
- Resource personal
- Education
- Housing
- Transport (free bus pass)
- Inventories (i.e. Computers, Office Equipments & Vehicles)

# EDUCATION SYSTEM FOR PERSONS WITH DISABILITIES:

- Primary School Level – Class 1 – 8 (8 years) and there is one for those who can go into mainstream school do so and some enter Vocational Training for Persons with Disabilities in Suva and Labasa (Some on going and in many cases for 3 years only)
- Very few students with disabilities go to University or abroad for further studies or into mainstream Vocational Technical Training School or Tertiary Institution.

# SCHOOLS:

- There are 17 Special School in Fiji
- 720 Primary School and 165 Secondary Schools
- In the Central Area there are 3 Secondary Schools that has accepted some PWD's with support services i.e. Brail Text and Sign Language Interpreters
- Current Civil Servants 101, Sanction Staff Ratio 77
- As per Special School Education Blueprint 2001, School roll recorded for PWD's - 1012



■ **THANK YOU**