



# TRAINING AND DIALOGUE PROGRAMS

GENERAL INFORMATION ON

MAINSTREAMING AND EMPOWERMENT OF PERSONS WITH  
DISABILITIES IN AFRICA

地域別研修「アフリカ地域障害者の地位向上」

*JFY 2008*

<Type: Leaders Training / 類型: 中核人材育成型>

NO. J08-04010

From July 2008 to December 2008

Phases in Japan and Thailand: From Aug. 17, 2008 to Sept. 20, 2008

This information pertains to one of the Training and Dialogue Programs of the Japan International Cooperation Agency (JICA), which shall be implemented as part of the Official Development Assistance of the Government of Japan based on bilateral agreement between both Governments.

# **I. Concept**

## **Background**

Japanese Official Development Assistance Charter announced in August 2003 that Japan takes into account the condition of the socially vulnerable in the aid policy formulation and implementation. Mainstreaming and empowerment of people with disabilities is in accord with “Human Security” among the fundamental principles of Japan’s aid. From this perspective Japan extends assistance aiming at protection and empowerment of individuals to enable life in dignity.

Being a part of the proposing countries for resolutions on the Asian and Pacific Decades for Disabled Persons, 1993-2002 and 2003-2012, and advocating the strengthening of Asia-Africa cooperation in the third Tokyo International Conference on African Development (TICAD III), Japan has been committing itself to contribution and sharing best practices to these regions.

Taking advantage of “African Decade of Disabled Persons, 2000-2009,” regional initiatives in the field of disabilities in Africa have been enhanced. However, the prejudice and discrimination against disabled persons still remain deeply rooted in society. Scarce opportunity of education and employment is still the cause for their serious marginalization in society. Thus JICA and DPI-Japan wish to assist their human resources development, as well as strengthening “the linkage and cooperation among African countries,” aimed in the New Partnership for Africa’s Development (NEPAD) formulated in October, 2001.

## **For what?**

The participants will acquire strategic skills of planning to upgrade their institutional capacity to promote "African Decade of Disabled Persons" in African countries, based especially on the Convention on the Rights of Persons with Disabilities.

## **For whom?**

Leaders of national disabled people's organizations (DPOs) actively involved in the mainstreaming and empowerment of persons with disabilities, in Southern Africa Federation of the Disabled (SAFOD) and Pan African Federation of the Disabled (PAFOD) member countries.

## **How?**

Participants shall have opportunities in Japan to develop strategic skills of planning to upgrade their institutional capacity by 1) obtaining strategies to strengthen "African Decade of Disabled Persons" in African countries; 2) identifying challenges facing their organizations; and 3) writing an action plan to reinforce the participants’ Disabled People’s Organizations among others. This project shall also serve mutual collaboration among participating countries, Japan and Thailand in the area of knowledge sharing.

## ***II. Description***

### **1. Title (J-No.): Mainstreaming and Empowerment of Persons with Disabilities in Africa (J0804010)**

#### **2. Period of program**

<b>Duration of whole program:</b>	July 2008 to December 2008
<b>Preliminary Phase:</b> (in a participant's home country)	July 2008 to August 2008
<b>Core Phase in Japan:</b>	August 17 to September 12, 2008
<b>Third Country Phase in Thailand:</b>	September 12 to 20, 2008
<b>Finalization Phase:</b> (in a participant's home country)	September 2008 to December 31, 2008

#### **3. Target Regions or Countries:**

6 participants from African region

#### **4. Overall Goal:**

The participants will acquire strategic skills of planning to enhance their institutional capacity, which leads to strengthen the capacity of SAFOD and PAFOD member DPOs' (Disabled Persons' Organizations) for promoting "African Decade of Disabled Persons" in African countries.

#### **5. Objective:**

Theme: "Anti-discrimination and Advocacy in relation with the Convention on the Rights of Persons with Disabilities (CRPD)."

At the end of the program, the participants are expected to achieve the following;

- (1) To obtain strategies to strengthen "African Decade of Disabled Persons" in African countries, through lectures and discussions on the Convention on the Rights of Persons with Disabilities, the global movement of persons with disabilities, activities of APCD, the "Asian and Pacific Decade of Disabled Persons" and experiences of disability movement in Japan.
- (2) To identify challenges facing organizations in respective countries by comparing cases with those of other countries,
- (3) To formulate an action plan for enhancing their institutional capacity, and
- (4) To submit a finalized action plan, which is modified based upon the insight obtained during the program in Thailand, followed by review/improvement within their organizations

#### **6. Eligible / Target Organization :**

National disabled people's organizations (DPOs) actively involved in the mainstreaming and empowerment of people with disabilities, in Southern Africa Federation of the Disabled (SAFOD) and Pan African Federation of the Disabled (PAFOD) member countries.

This course is **NOT for government organizations** (such as Ministry of Social Welfare, Ministry of Health , etc.), **only for DPOs**.

**7. Total Number of Participants : 6**

**8. Language to be used in this project : English**

**9. Contents:**

This program consists of the following components. Details on each component are given below:

<b>(1) Preliminary Phase in a participant's home country</b> (July 2008 to August 2008) <i>Participating organizations make required preparation for the Program in the respective country.</i>	
Modules	Activities
Inception report	Formulation and submission of Inception Report

<b>(2) Core Phase in Japan</b> (August 17, 2008 to September 12, 2008) <i>Participants dispatched by the organizations attend the Program implemented in Japan.</i>		
Modules	Subjects/Agendas	Methodology
1) Discrimination	Identifying discrimination instances	Workshop
	Presentation of Inception Reports	Presentation and discussion
2) Convention on the Rights of Persons with Disabilities	Persons with disabilities in the world Human Security and JICA's assistance for Persons with Disabilities	Lecture Seminar
	UN Convention on the Rights of Persons with Disabilities	Lecture Read-through
	Reasonable accommodation	Lecture Field visit
	Monitoring International cooperation	Lecture
	World Bank seminar Anti-discrimination law brought forward by disabled people	Video conference seminar Lecture
	Accessibility check	Field visit
3) Citizens' movement and their practice in Japan	Japanese movement and political measures for persons with disabilities in Japan	Lecture
	Independent Living	Lecture Field visit
	Peer-counseling	Practice
	Rights of minority groups in cross-disability approach Organization of persons with disabilities	Lecture Field visit

4) Writing an Action Plan (Interim Report)	Action Plan Writing	Workshop
--	---------------------	----------

**(3)Third Country Phase in Thailand**

(September 12, 2008 to September 20, 2008)

*The core phase is combined with the third country phase in Thailand.*

Modules	Subjects/Agendas	Methodology
Asia and the Pacific Decade of Disabled Persons and Disability Movement in Developing Countries	Activities of the Asia-Pacific Development Center on Disability (APCD) Activities of the Disabled Peoples' International Asia-Pacific Regions (DPI-AP) Declaration	Presentation Discussion Lecture Field study

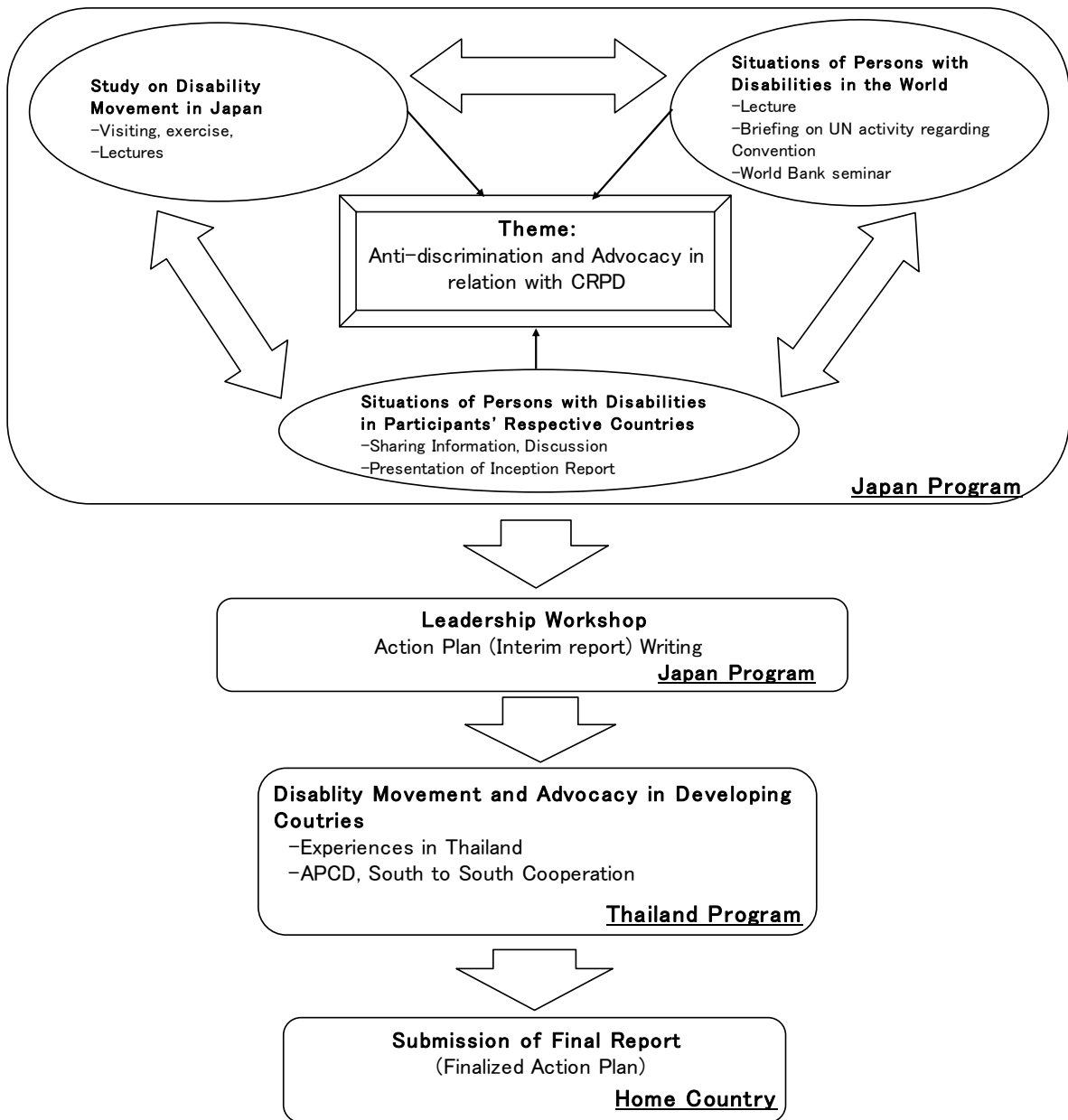
**(4)Finalization Phase in a participant's home country**

(September 2008 to December 31, 2008)

*Participating organizations produce final outputs by making use of results brought back by participants. This phase marks the end of the Program.*

Modules	Activities
Finalized action plan (Final report)	Finalization and submission of the action plan followed by review/improvement within their organization by December 31, 2008, by e-mail to Mr. SAITO Toru ( <a href="mailto:Saito.Toru@jica.go.jp">Saito.Toru@jica.go.jp</a> ) and Ms. MIYOSHI Emiko ( <a href="mailto:miyoshi.emiko@jice.org">miyoshi.emiko@jice.org</a> )

<Structure of the program>



### **III. Conditions and Procedures for Application**

#### **1. Expectations for the Participating Organizations:**

- (1) This program is designed primarily for organizations that intend to address specific issues or problems identified in their operation. Participating organizations are expected to use the project for those specific purposes.
- (2) This program is enriched with contents and facilitation schemes specially developed in collaboration with relevant prominent organizations in Japan. These special features enable the project to meet specific requirements of applying organizations and effectively facilitate them toward solutions for the issues and problems.
- (3) As this program is designed to facilitate organizations to come up with concrete solutions for their issues, participating organizations are expected to make due preparation before dispatching their participants to Japan by carrying out the activities of the Preliminary Phase described in section II -9 .
- (4) Participating organizations are also expected to make the best use of the results achieved by their participants in Japan by carrying out the activities of the Finalization Phase described in section II -9.

#### **2. Nominee Qualifications:**

Applying national Disabled Peoples' Organizations are expected to select nominees who meet the following qualifications.

##### **(1) Essential Qualifications**

- 1) Current Duties: Leader of the national Disabled Peoples' Organization actively involved in the mainstreaming and empowerment of people with disabilities

**(Non-Disabled Persons and Government Officers are considered ineligible.)**

- 2) Language: Must have a competent command of spoken and written English (This course includes active discussions and writing an action plan, thus requires high competency of English.)

In case of people with hearing disability, be capable of American Sign Language.

- 3) Health: Must be in good health, both physically and mentally, to participate in the Program in Japan and Thailand
- 4) Must not be serving any form of the military

##### **(2) Recommendable Qualifications**

Age: Under the age of fifty (50)

#### **3. Required Documents for Application**

- (1) **Application Form:** The Application Form is attached to this General Information.
- (2) **Questionnaire:** To be submitted with the application form. Fill in Annex-2 of this General Information.
- (3) **Inception Report:** To be submitted with the application form. Detailed information is provided in the ANNEX "Outline of Inception Report" of this General Information.

#### 4. Procedure for Application and Selection :

##### (1) Submitting the Application Documents:

Closing date for application to the JICA Center in JAPAN: June 17, 2008

**Note: Please confirm the closing date set by the respective country's JICA office or Embassy of Japan of your country to meet the final date in Japan.**

##### (2) Selection:

After receiving the document(s) through due administrative procedures in the respective government, the respective country's JICA office (or Japanese Embassy) shall conduct screenings, and send the documents to the JICA Center in charge in Japan, which organizes this project. Selection shall be made by the JICA Center in consultation with the organizations concerned in Japan based on submitted documents according to qualifications. *The organization with intention to utilize the opportunity of this program will be highly valued in the selection.*

##### (3) Notice of Acceptance

Notification of results shall be made by the respective country's JICA office (or Embassy of Japan) to the respective Government by **not later than July 17, 2008.**

#### 5. Document(s) to be submitted by accepted participants:

Questionnaire for further information on disability assistance may be sent as necessary, to accepted participants by e-mail or through the respective country's JICA office. It must be submitted as soon as possible to the JICA Center in charge in Japan.

#### 6. Conditions for Attendance:

- (1) to observe the schedule of the program,
- (2) not to change the program subjects or extend the period of stay in Japan,
- (3) not to bring any members of their family,
- (4) to return to their home countries at the end of the program in Japan according to the travel schedule designated by JICA,

- (5) to refrain from engaging in political activities, or any form of employment for profit or gain,
- (6) to observe the rules and regulations of their place of accommodation and not to change the accommodation designated by JICA, and
- (7) to participate the whole program including a preparatory phase prior to the program in Japan. Applying organizations, after receiving notice of acceptance for their nominees, are expected to carry out the actions described in section II -9 and section III-4.

## IV. Administrative Arrangements

### 1. Organizer:

(1) **Name:** JICA Tokyo

(2) **Contact:** Mr. SAITO Toru ([Saito.Toru@jica.go.jp](mailto:Saito.Toru@jica.go.jp)) and Ms. MIYOSHI Emiko ([miyoshi.emiko@jice.org](mailto:miyoshi.emiko@jice.org))

### 2. Implementing Partner:

(1) **Name:** Japan National Assembly of Disabled Peoples' International (DPI-Japan)

(2) **Contact:** Ms. NAKANISHI Yukiko ([yuki@asiadisability.com](mailto:yuki@asiadisability.com))

(3) **URL:** <http://www.dpi-japan.org/english/index.html>

#### (4) Remark:

Since its establishment in 1986, DPI-Japan has worked for the realization of independent living and human rights of persons with disabilities. At international level, DPI-Japan takes advantage of DPI's international network to provide technical support to DPOs in developing countries. In addition, DPI-Japan networks with international development organizations like World Bank and JICA. Domestically, DPI-Japan, as a cross-disability umbrella organization, has 60 membership organizations which are all organizations of persons with disabilities, including physical, intellectual and psychiatric disabilities as well as chronic illness.

### 3. Travel to Japan:

(1) **Air Ticket:** The cost of a round-trip ticket between an international airport designated by JICA and Japan will be borne by JICA.

(2) **Travel Insurance:** Term of Insurance: From arrival to departure in Japan. \*the traveling time outside Japan shall not be covered.

### 4. Accommodation in Japan:

JICA will arrange the following accommodations for the participants in Japan:

JICA Tokyo International Center (JICA TOKYO)

Address: 2-49-5 Nishihara, Shibuya-ku, Tokyo 151-0066, Japan

TEL: 81-3-3485-7051 FAX: 81-3-3485-7904

(where "81" is the country code for Japan, and "3" is the local area code)

If there is no vacancy at JICA TOKYO, JICA will arrange alternative accommodations for the participants. Please refer to facility guide of TIC at its URL, <http://www.jica.go.jp/english/contact/pdf/tic.pdf>

### 5. Expenses:

The following expenses will be provided for the participants by JICA:

- (1) Allowances for accommodation, living expenses, outfit, and shipping
- (2) Expenses for study tours (basically in the form of train tickets.)
- (3) Free medical care for participants who become ill after arriving in Japan (costs related to pre-existing illness, pregnancy, or dental treatment are not included)
- (4) Expenses for program implementation, including materials

For more details, please see p. 9-16 of the brochure for participants titled "KENSU-IN GUIDE BOOK," which will be given to the selected participants before (or at the time of) the pre-departure orientation.

#### **6. Pre-departure Orientation:**

A pre-departure orientation will be held at the respective country's JICA office (or Japanese Embassy), to provide participants with details on travel to Japan, conditions of the workshop, and other matters.

## ***V. Other Information***

**Visa for Thailand :** Visa will be arranged and issued in participants' respective countries. If participants have difficulty to apply in their countries, it will be applied and issued in Japan.

**Certificate :** Participants who have successfully completed the course with submission of the final Action Plan to JICA will be awarded a certificate by JICA. The deadline is December 31, 2008.

## **VI. ANNEX:**

Mainstreaming and Empowerment of Persons with Disabilities in Africa (JFY 2008)

### *Outline of Inception Report*

Theme: Anti-discrimination and advocacy in relation with the Convention on the Rights of Persons with Disabilities

#### Part I. Degree of distinction of the Convention

##### 1. What has been done to raise awareness of the Convention?

1-1 In your government?

1-2 In DPOs (disabled persons' organizations)?

##### 2. Status of the Convention in your country

2-1 Did your government already ratify the Convention?

2-2 If not, does your government work for the ratification now?

#### Part II. Discrimination on the ground of disabilities and Advocacy

##### 1. Have you ever conducted a survey of discrimination cases on the ground of disability in your country?

1-1 by your government?

1-2 by DPOs?

##### 2. Please mention examples of discrimination cases on the ground of disability in the following situations (please select at least two situations)

2-1 Work (job seeking, workplace etc.)

2-2 Education

2-3 Transportation

2-4 Information and communication

2-5 Social services

2-6 Participation in political life (election, gathering etc.)

2-7 Family life

2-8 Others

##### 3. Protection and advocacy of the rights of persons with disabilities

3-1 Does your country have anti-discrimination law that covers persons with disabilities?

3-2 Does your country have remedy system to protect the rights of persons with disabilities?

3-3 What roles do DPOs in your country play to advocate the rights of persons with disabilities?

3-4 Are persons with disabilities ensured an equal access to judicial procedure (investigation, court etc) without discrimination?



(1) For the participants using wheelchairs or crutches

1) Traveling with your own wheelchair?

a)  NO

b)  YES → categories:

Manual wheelchair

Weight (      kg), Width (      cm), Length (      cm), Height (      cm)

check in at the counter

wish to use it to the boarding gate, where possible.

Electric wheelchair

Weight (      kg), Width (      cm), Length (      cm), Height (      cm)

check in at the counter

wish to use it to the boarding gate, where possible.

Wet battery driven wheelchair

Dry battery driven wheelchair

2) Requiring airport wheelchair service inside the airport?

a)  NO

b)  YES

•  Can ascend/descend step. But requires wheelchair for distance

•  Can not ascend/descend steps, but able to make own way in the cabin

•  Completely immobile and requires assistance to/from cabin seat

3) Requesting to use an aisle chair while flying?

a)  NO

b)  YES

4) If you request other special arrangement, please specify.

---

---

(2) For the participants with sight or hearing impairment

1) Are you traveling with an assistance dog?

a)  NO

b)  YES

2) If you request other special arrangement, please specify.

---

---

8. Food Restriction

Mark items which you cannot eat or drink because of your religious beliefs, vegetarianism, or health condition (not your food preference).

(1)  Pork

(2)  Beef

(3)  Chicken

(4)  Fish

(5)  Shellfish

(6)  Egg

(7) ( ) Alcohol

(8) ( ) Others (Please specify) \_\_\_\_\_ )

## ***For Your Reference***

### **JICA and Capacity Development**

The key concept underpinning JICA operations since its establishment in 1974 has been the conviction that “capacity development” is central to the socioeconomic development of any country, regardless of the specific operational scheme one may be undertaking, i.e. expert assignments, development projects, development study projects, training programs, JOCV programs, etc.

Within this wide range of programs, Training Programs have long occupied an important place in JICA operations. Conducted in Japan, they provide partner countries with opportunities to acquire practical knowledge accumulated in Japanese society. Participants dispatched by partner countries might find useful knowledge and re-create their own knowledge for enhancement of their own capacity or that of the organization and society to which they belong.

About 460 pre-organized programs cover a wide range of professional fields, ranging from education, health, infrastructure, energy, trade and finance, to agriculture, rural development, gender mainstreaming, and environmental protection. A variety of programs are being customized to address the specific needs of different target organizations, such as policy-making organizations, service provision organizations, as well as research and academic institutions. Some programs are organized to target a certain group of countries with similar developmental challenges.

### **Japanese Development Experience**

Japan was the first non-Western country to successfully modernize its society and industrialize its economy. At the core of this process, which started more than 140 years ago, was the “*adopt and adapt*” concept by which a wide range of appropriate skills and knowledge have been imported from developed countries; these skills and knowledge have been adapted and/or improved using local skills, knowledge and initiatives. They finally became internalized in Japanese society to suit its local needs and conditions.

From engineering technology to production management methods, most of the know-how that has enabled Japan to become what it is today has emanated from this “*adoption and adaptation*” process, which, of course, has been accompanied by countless failures and errors behind the success stories. We presume that such experiences, both successful and unsuccessful, will be useful to our partners who are trying to address the challenges currently faced by developing countries.

However, it is rather challenging to share with our partners this whole body of Japan’s developmental experience. This difficulty has to do, in part, with the challenge of explaining a body of “tacit knowledge,” a type of knowledge that cannot fully be expressed in words or numbers. Adding to this difficulty are the social and cultural systems of Japan that vastly differ from those of other Western industrialized countries, and hence still remain unfamiliar to many partner countries. Simply stated, coming to Japan might be one way of overcoming such a cultural gap.

JICA, therefore, would like to invite as many leaders of partner countries as possible to come and visit us, to mingle with the Japanese people, and witness the advantages as well as the disadvantages of Japanese systems, so that integration of their findings might help them reach their

developmental objectives.



***CORRESPONDENCE***

For enquiries and further information, please contact the JICA office or the Embassy of Japan. Further, address correspondence to:

**JICA Tokyo International Center (JICA TOKYO)**  
**Address: 2-49-5 Nishihara, Shibuya-ku, Tokyo 151-0066, Japan**  
TEL: +81-3-3485-7051 FAX: +81-3-3485-7904